

SHEFFIELD MULTI-AGENCY FEMALE GENITAL MUTILATION (FGM) PATHWAY

(For victims and those at risk)

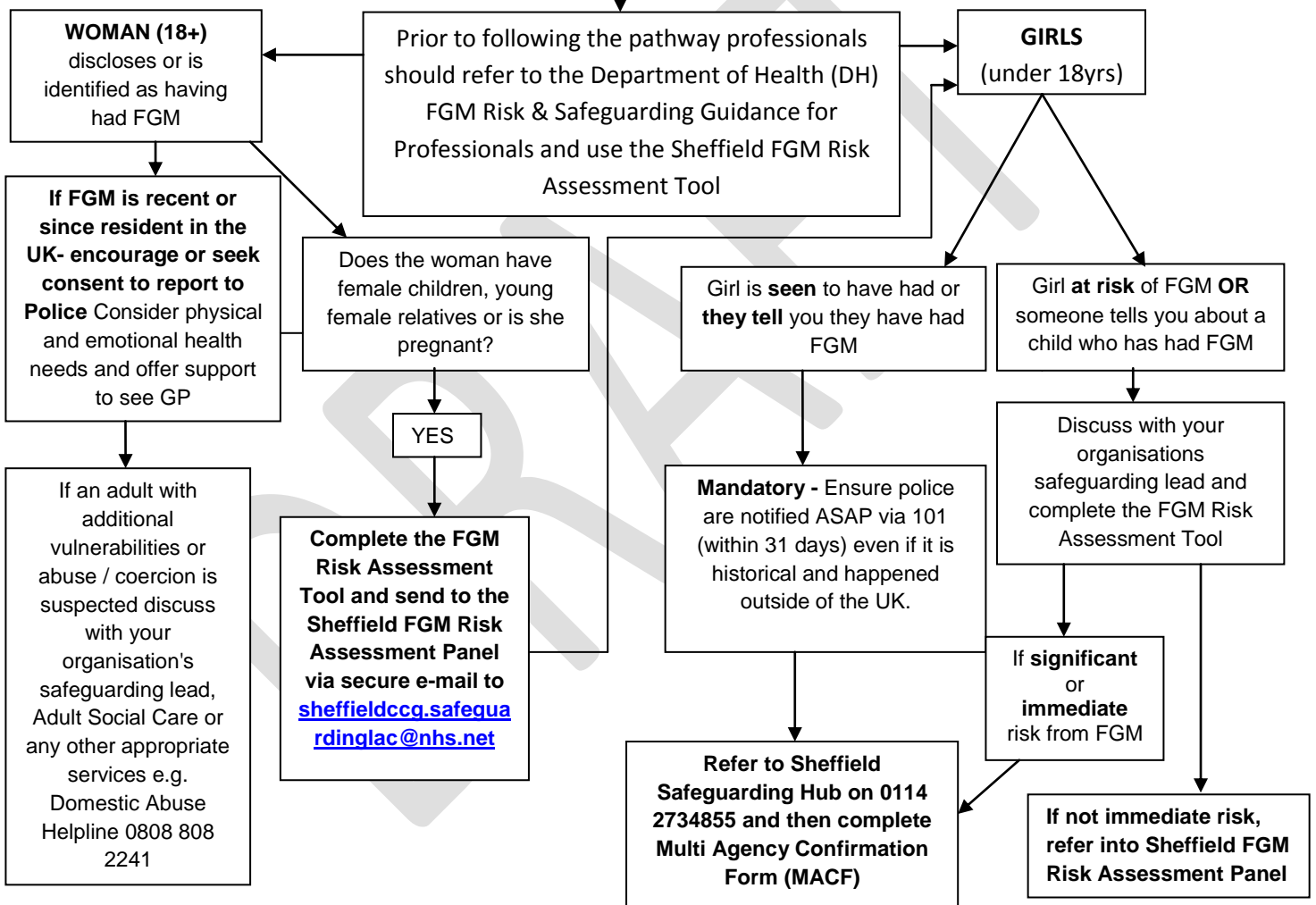
Questions to consider asking to aid identification of victims and those at risk

Do you come from a community that practices cutting (FGM)?

Have you/ your wife / partner or any other family members been cut e.g. sisters, cousins etc.?

Do you or any member of your family want/plan to have your daughter cut (Inc. grandparents)?

Provide information to women and girls on how to access health, support services, counselling etc.



ENSURE ACCURATE RECORDS ARE KEPT AND

INFORMATION SHARED WITH APPROPRIATE AGENCIES

Links to Sheffield procedures and national guidance

http://sheffieldscb.proceduresonline.com/chapters/p_female_gen.html

<https://www.gov.uk/government/publications/safeguarding-women-and-girls-at-risk-of-fgm>

<https://www.gov.uk/government/publications/multi-agency-statutory-guidance-on-female-genital-mutilation>